

NEW FEATURES

MORE FEATURES MORE FLEXIBILITY MORE OPTIONS MORE PROGRAMMABILITY

- ✓ SOAK TEST SUITE
- ✓ CLEANER AREA SET/UNSET
- ✓ EOL OPERATION COMPATIBLE WITH N/C & N/O DETECTORS
- ✓ PROGRAMMABLE 2ND INTRUDER TIME
- ✓ 90 SECOND ABORT TIME-LIMIT OPTION
- ✓ RESTORE FACTORY SETTINGS FROM PANEL AS WELL AS RKP
- ✓ KEYPAD PA OPTION (PRESS ③ & ⑨ TOGETHER)
- ✓ SINGLE BUTTON QUICK SET OPTION & SINGLE BUTTON CHIME
- ✓ RESET BUTTON CANCELS SETTING OPTION
- ✓ PROGRAMMABLE FULL SET SUITE
- ✓ DISABLE MANUAL OMIT ON SELECTED ZONES
- ✓ LATCHING WALK TEST MODE
- ✓ QUIET ENTRY TONE ON PART SET
- ✓ ZONE DISABLE SUITE
- ✓ SILENT PART SET CONFIRMATION TONE OPTION
- ✓ SEPARATE BELL & AUXILIARY FUSES
- ✓ SW+ OUTPUT CAN POWER DETECTORS DIRECTLY
- ✓ LATCHING SENSOR AUTOMATIC & MANUAL RESET
- ✓ BELL BOX HOLD-OFF MODE (FOR EASIER SERVICING)
- ✓ PROTECTED ENGINEER CODE OPTION
- ✓ ALL 24 HOUR ZONES DISABLED IN ENGINEER MODE
- ✓ KEY SWITCH FACILITY
- ✓ EN 50131-1 REQUIREMENTS OPTION. EN 50131-6 POWER SUPPLY DESIGN
- ✓ INDEPENDENTLY TESTED FOR EN 50130-4 EMC

FREE UDL-Modem

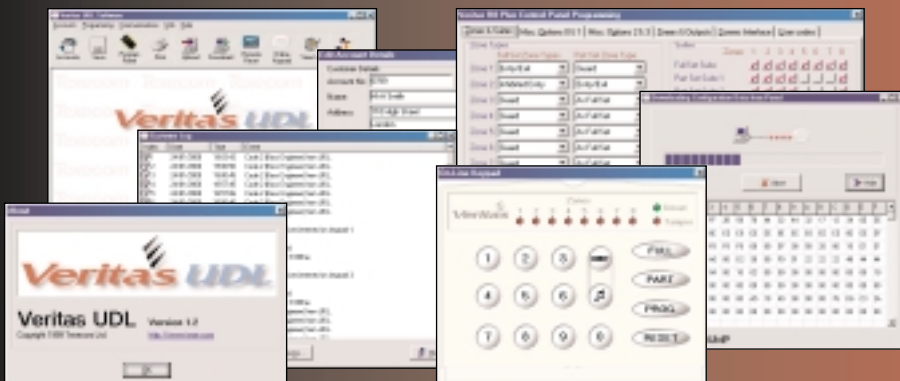
FREE Upload/Download modem & software worth £35.00 with every Veritas Excel control panel.

The UDL-Modem adds the ability to Upload/Download remotely with the Veritas Excel & Veritas R8 Plus control panels.

You can now program the system from your home or office without having to visit the installation site, saving you valuable time and money.



Programming is easy and intuitive with the Veritas UDL software.



BEST MANUFACTURER 2000 INTRUDER ALARM MANUFACTURER of the YEAR 2000 BEST MANUFACTURER 1999

- 1st For offering the best quality products at the right prices
- 1st For reliability & responsiveness
- 1st For excellence in customer care & service
- 1st For providing a high level of support & servicing including training & help lines

SPECIFICATION

VERITAS EXCEL ENDSTATION ELECTRICAL

Current Consumption
Quiescent current < 50mA
Alarm current < 150mA

Fuses

Mains 230V_{AC} T125mA, 250V, 20mm

Mains 115V_{AC} T250mA, 250V, 20mm

Bell Saturation Voltage < 1.0V_{DC} at 1.6A

Strobe Saturation Voltage < 1.0V_{DC} at 1.6A

SW + Ve Output

< 1.0V_{DC} at 1.6A when low

12V via 1kΩ when high

Internal Speaker (50mm, 16Ω)

Adjustable low level volume

≥ 90dB at 1m high level volume

Extension Speakers Minimum load 4Ω

EOL Loop Thresholds (Zones 1 - 8, resistors included)

Low (closed) resistance 10kΩ, 1%

High (open) resistance 33kΩ, 1% (or 10kΩ, 1% + 22kΩ, 1%)

Negative Loop Thresholds (Global Tamper)

Minimum open resistance 110kΩ

Maximum closed resistance 20kΩ

Loop Response Time

Minimum 200ms

Maximum 800ms

Remote Keypads Up to six

Communicator Interface

8 channel outputs (programmable polarity)

Line monitor input (negative removed on line-cut)

NVM (Non-Volatile Memory) Programming and Log

POWER SUPPLY

Mains Supply Voltage Rating 230V_{AC}/115V_{AC} (±10%)

Maximum Total Current Rating

600mA_{DC} at 230V_{AC}/115V_{AC} (±10%)

1A_{DC} at 230V_{AC}/115V_{AC} (±5%)

Ripple < 5%

Rechargeable Battery Type Texcom 12V sealed lead acid

ENVIRONMENTAL

Operating Temperature -10°C (+14°F) to +50°C (+122°F)

Storage Temperature -20°C (-4°F) to +60°C (+140°F)

Maximum Humidity 95% non-condensing

EMC Environment Residential/Commercial/Light Industrial or Industrial

PHYSICAL

Dimensions 282mm x 225mm x 80mm

Rechargeable Battery Capacity 1.2Ah to 7.0Ah

VERITAS EXCEL LCD REMOTE KEYPAD

ELECTRICAL

Operating Voltage

13.7V_{DC} nominal

10.0V_{DC} minimum

Current Consumption < 85mA

Volume Dual Level

Cable 4-Core, up to 100m

Connection Star, Daisy Chain or any combination

ENVIRONMENTAL

Operating Temperature -10°C (+14°F) to +50°C (+122°F)

Storage Temperature -20°C (-4°F) to +60°C (+140°F)

Maximum Humidity 95% non-condensing

EMC Environment

Residential/Commercial/Light Industrial/Industrial

PHYSICAL

Dimensions 145mm x 115mm x 30mm

Packed Weight 260g approx.

EUROPEAN STANDARDS

Conforms to European Union (EU) Low Voltage Directive (LVD) 73/23/EEC and Electro-Magnetic Compatibility (EMC) Directive 89/336/EEC.



EASEM

BSIA

CE