



The Nano System

GENT TECHNOLOGY: POWERFUL. SIMPLE. COMPATIBLE.



Introducing **Nano**, the revolutionary new control panel

Nano is the latest fire detection control panel from Gent by Honeywell. Nano is a single loop analogue addressable panel with an intuitive user interface and attractive appearance. Managing up to 127 devices on the loop, Nano is ideal for small systems.



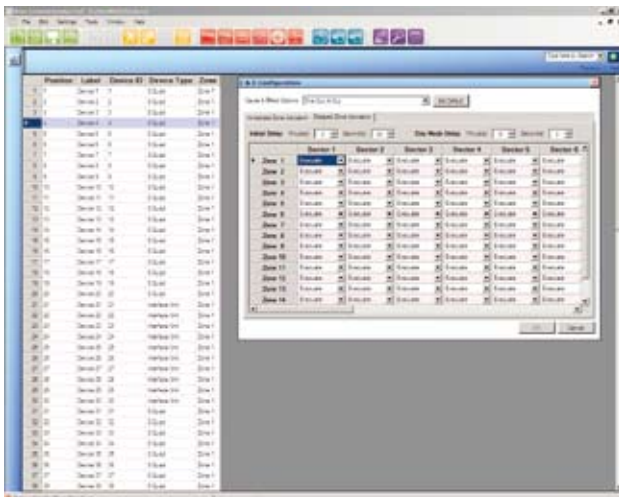
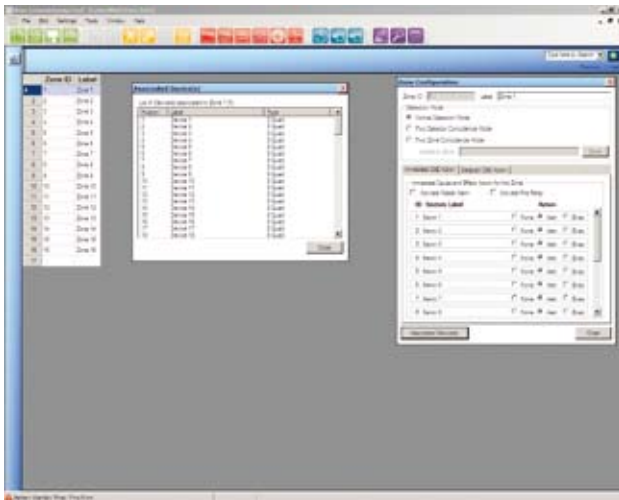
nano

Nano has been designed with ease of use as a high priority. From installation and commissioning to everyday use, Nano delivers an experience that makes the fire alarm system easy to use and safe to operate. The appearance of the panel means that Nano may be installed and look good in any type of building.

Nano operates the latest range of Vigilon loop devices from Gent by Honeywell. This allows a small system to benefit from Gent's advanced fire detection technology and powered loop performance with ranges such as S-Quad and S-Cubed.



Control panel from Gent



Designed for small buildings, Nano offers a simple cause and effect which can be configured by an easy to use PC commissioning tool.

The new commissioning tool has been developed specifically to improve the set up time for Nano. Future configuration changes can be managed through the tool or directly via the interface on the panel.



S-Quad Sensor: four functions in one



Nano is compatible with the full S-Quad range. Reduce system costs by taking full advantage of the S-Quad's multi-function devices that combine fire sensing with a sounder and/or a strobe. Fewer devices means less cabling and therefore reduced time spent on site.

Because all of the S-Quad devices are powered by the loop each one requires just one pair of cables and one set of terminations to provide all of its multi-sensor and sounder, strobe and speech functionalities.



S-QUAD – SAVING YOU TIME AND MONEY

- There is a built-in isolator in every single S-Quad – saving you more money whilst improving the integrity of the system
- Each S-Quad has a monitored line that can be configured for a fire output or a fire input – this may remove the need and cost for a separate interface

S-QUAD – ENSURING YOUR PEACE OF MIND

- The capability and function of Nano with S-Quad ensures that the system complies with the requirements of:
 - The Disability Discrimination Act Part III 1995
 - The Building Regulations Approved Document B&M
 - The British Standard BS 5839-1:2002





SENSOR

- The combined power of Nano and S-Quad provides quick, intelligent fire decisions
- The S-Quad sensor can incorporate one or all of the following sensing elements: optical, dual optical, heat and CO. So depending on the environment, anything from an Optical only to a Dual Optical Heat CO sensor can be used
- S-Quad's unique combination of sensing elements eliminates a higher number of false alarms
- Uniquely the S-Quad has a series of sensor states that are designed to overcome the false alarm risks in different types of rooms



STROBE

- The built-in, high intensity flashing strobe helps alert occupants in noisy environments as well as the hearing impaired
- The strobe function is built in to the centre of the sensor – this gives the whole device a low profile. Far better looking than bulky layers of strobes and sounders that are fixed to some sensor bases
- It's very low power consumption means that the S-Quad strobe can achieve the equivalent of a 3W Xenon strobe whilst only using 1/20th of the power
- Low power consumption and high output LED technology ensures reliable and cost efficient units
- All strobes are synchronized across the Nano loop



SOUNDER

- The sensor sounder device allows an even distribution of sound with only one device to install
- Instead of three cables being needed to wire individual sensors, strobes and sounders, these device innovations can significantly reduce the cost of install by requiring just one cable terminated to one device
- As a result, eight S-Quad devices can be provided for the same price of just one traditional wall-mounted sounder and its own cabling and installation
- Low current consumption means that more sensor sounders can be supported on the Nano loop



SPEECH MESSAGES

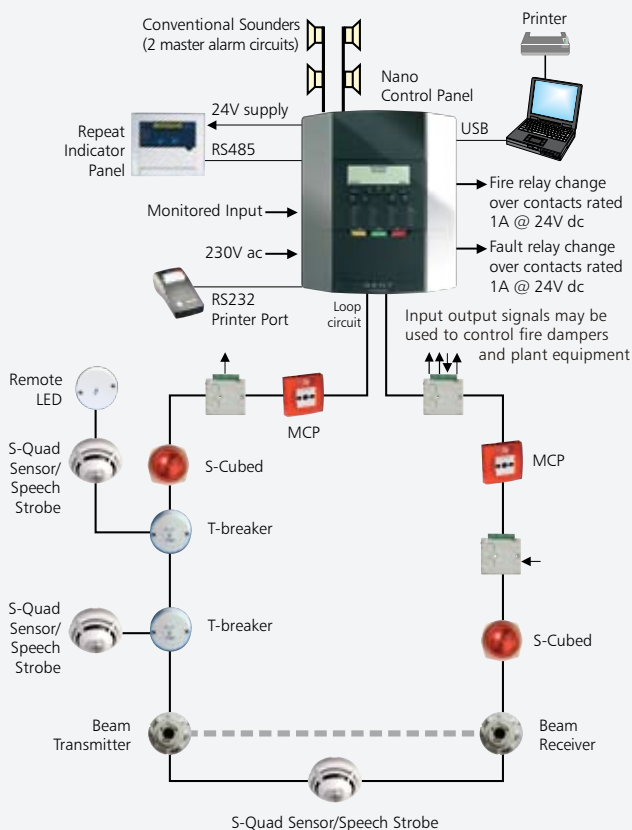
- Sensors with voice capability can reduce the need for speakers and traditional voice alarm amplifiers in applications where background music or PA is not required
- Up to 2 different standard messages are stored in each device to allow different messages to be played in each area for phased evacuation
- A bell tone can be reproduced within the device required for schools where the fire alarm sounders are used to produce a 'class change' signal
- Voice messages are synchronised across the loop to ensure clear instructions throughout the building

S-Cubed: Audio Visual Alarms

Gent by Honeywell's patented S-Cubed – Speech messages/Sounder/Strobe – devices are fully loop powered and do not require any separate sounder circuits.



- Low current consumption means that more sounders can be supported on the Nano loop
- The S-Cubed sounder/strobes are fully compatible with the S-Quad range and all are synchronised across the loop
- Each S-Cubed requires just one pair of cables and one set of terminations to provide all of its sounder, strobe and speech functionalities
- The strobe option is equivalent to a 3W Xenon strobe but uses only 1/20th of the power
- The strobe and sound element is fully monitored for circuit failures
- S-Cubed can help the Nano system meet the requirements of the Disability Discrimination Act Part III
- S-Cubed can be programmed to store customer messages



**Sounder,
speech
messages,
strobe**



**Sounder
only**



**Sounder,
speech
messages**

More Loop Powered Devices

The combination of powerful software in the Nano control panel and Vigilon's advanced range of loop powered devices delivers a flexible, easy to use system for small buildings.



BEAM SENSORS

- The beam sensors are connected to the same circuit as all other devices, no additional wiring is needed
- The loop powered beam sensors do not require any additional power supplies or interfaces
- This makes them the most economical solution for beam detection



INTERFACES

- Nano can support a high number of interfaces on the loop, exceeding typical Nano system requirements
- Interfaces with output channels don't need additional relays – the Nano panel will monitor for cable faults
- The range includes low voltage and mains switching variants to meet all application needs



MANUAL CALL POINTS

- The manual call point is available as a break glass variant or with resettable elements
- As well as saving on the cost of replacement glasses, the resettable element is ideal where glass could prove to be a safety hazard
- Surface or flush mounted variants are available - the call point flushes with a standard installation back box

The Nano System

GENT by Honeywell is synonymous with quality and innovation in the fire detection and alarm industry. Gent technology meets rigorous British and European standards for all projects ranging from small installations to complex, multi-site networks.

GENT BY HONEYWELL IN THE UK

Gent works in partnership with the Gent 24 Network of Approved System Integrators who supply Gent equipment and carry out design, installation, commissioning and maintenance operations to the highest standards of workmanship.

GENT



GENT BY HONEYWELL INTERNATIONAL

Across the world, Gent works in partnership with approved distributors who supply Gent equipment and carry out design, installation, commissioning, and maintenance operations to the highest standards of workmanship.

GENT
by Honeywell



GENT
by Honeywell

Gent by Honeywell 140 Waterside Road Hamilton Industrial Park Leicester LE5 1TN UK

Tel (UK) +44 (0)116 246 2000	Tel (Int'l) +44 (0) 116 246 2200	E-mail gentenquiry@honeywell.com
Fax (UK) +44 (0)116 246 2300	Fax (Int'l) +44 (0) 116 246 2210	Website www.gent.co.uk