

# Observer



## SEAMLESS VIEWING WITH NETVU OBSERVER

Dedicated Micros free NetVu Observer video management software allows users to seamlessly view distributed images from any "NetVu Connected" product, such as the New DS2 or DV-IP Server, from any moment in time, anywhere in the world.

Developed using DM's innovative SDK (Software Development Kit), NetVu Observer offers flexible site management from a single server to a large multi-site installation such as a town centre, hospital or campus environment. Its site tree facility allows servers and individual cameras to be accessed quickly, and the inclusion of the multi-site viewing facility makes the management of sites more efficient and responses to events even quicker.

NetVu Observer now includes features that make it capable of supporting RVRC (Remote Video Response Centre) operation in accordance with BS8418. These include auto event distribution to

multiple user stations, a full SQL database of received alarms with event closure characterisation, session management to enable multiple events from a single site to be handled as a single alarm session, auto recording of all locally viewed video and report generation capabilities to enable both billing and maintenance management.

Built-in MPEG-4 support provides simultaneous viewing of both JPEG and MPEG-4 video streams, allowing the user to optimise bandwidth usage on constrained networks. A straight forward drag and drop GUI, together with saved screen views provide the user with an easy to use viewing solution, offering a seamless single user interface to all NetVu Connected products.

In addition, NetVu Observer's built-in replay server allows the application of features (such as picture in picture, and GOTO event search) to archived data from a hard drive, server or DVD / CD.

**NetVu Observer is available as a download from the Dedicated Micros website and is included with all NetVu Connected products. Visit [http://www.dedicatedmicros.com/uk/netvu\\_observer](http://www.dedicatedmicros.com/uk/netvu_observer) or contact customer services in your region for more information**

## FEATURES

- ▶ Viewing of live and recorded images in a wide range of screen configurations
- ▶ Controls all NetVu Connected video servers including the new DS2 and DV-IP Server
- ▶ Up to 36 simultaneous connections to 36 different sites
- ▶ Simple drag and drop selection of cameras.
- ▶ Automatic detection and switching between MultiMode MPEG-4 / JPEG live and playback streams
- ▶ Saveable views made up of multiple sites
- ▶ Map Editor function for creation & tailoring of maps (plug-in required)
- ▶ Control of remote functions including bi-directional audio, and telemetry
- ▶ Reference images assignable to specific cameras
- ▶ Telemetry control, including PTZ and telemetry presets
- ▶ Text and Smart Search Support
- ▶ Save/print image option
- ▶ Event and Search preview window
- ▶ Text display allows information from systems such as POS and ATM machines to be viewed, in association with captured video, via a dedicated window

### FREE RVRC Features

- ▶ Multi site alarm control to multiple operators
- ▶ Event characterisation
- ▶ Session management
- ▶ Report generation
- ▶ Multiple user access



## SEARCH & PLAYBACK

- One button touch
- Frame advance/rewind, fast picture search and pause keys
- GOTO time and date
- Playback in full screen and multi-screen

## MULTI-SCREEN

NetVu ObserVer allows you to view images in any display mode, from single, picture in picture, quad and multi-screen (6, 9, 16, 25 & 36 way screens can be viewed).

For ultimate flexibility you can now have any combination of images on the multi-screen view. Live & Recorded images can be viewed simultaneously through the web pages.

## SINGLE SITE VIEWING

NetVu Observer provides the ability to select a single unit and take control of each video camera on the unit (if telemetry is available) and view all cameras in a multi-screen format.

## MULTI-SITE VIEWING

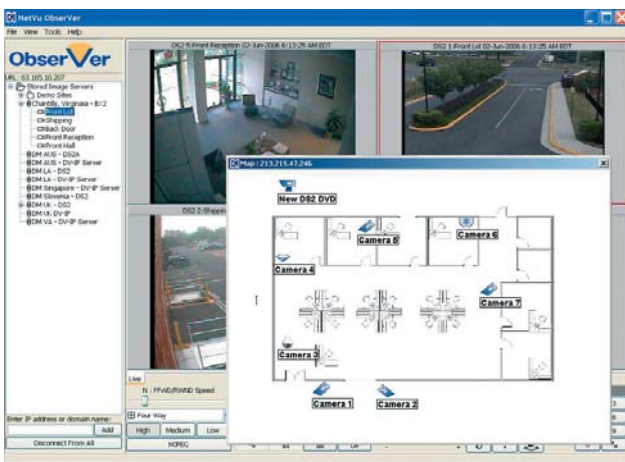
The application supports the ability to select and control multiple new NetVu Connected products, across a number of sites, displaying cameras from each of the units being controlled.

## MAP SUPPORT

NetVu ObserVer now incorporates Map Support in its GUI. Users are able to use map images and floor plans to identify camera locations around a site, installation or CCTV network. Clicking on the relevant camera will instantly connect the user to the camera image stream.

## MAP EDITOR

With the addition of the free Map Editor (requires registration), users are able to construct their own network of site plans for use in NetVu ObserVer.



Map Editor

## JPEG AND MPEG-4 COMPRESSION SUPPORT

NetVu Observer provides the option to switch between viewing live and recorded images in both JPEG and MPEG4 video format. A single key press will switch the video images from the NetVu Connected from JPEG to MPEG-4 and vice-versa.

This switchable option allows users with bandwidth constrained networks to receive image updates using MPEG-4.

## MultiMode SUPPORT

As the new Digital Sprite 2 and DV-IP Server now support **MultiMode** recording, NetVu ObserVer will automatically switch between MPEG and JPEG recorded images on event or alarm.

## TRANSCoding

NetVu ObserVer supports the New DS2 and DV-IP products which have the unique **TransCoding** capability. This provides MPEG-4 transmission of either the recorded or live video, independent of how the video has been recorded, ensuring that remote operators can view fast update images of the best quality even over limited bandwidth links.

## LOCAL RECORDING

All connected sites can be recorded to the local hard disk of the operators PC at the touch of a button. The file is recorded and indexed by date and time and may be reviewed within NetVu ObserVer by using the replay archive function.

## ALARM RECEIVING

Alarm receiving has now been added to NetVu ObserVer. This includes the new Event Distribution Point application which passes them on to available operators as they become available. System exceptions are also logged on the DVR such as camera fails, system set/unset, detector management (for BS8418) and system restarts.

## SITE MANAGEMENT

The application supports a site tree which displays all units and cameras that are accessible to the Operator. This allows simple selection of a unit or a specific camera within the list and through DuoVu and the Drag & Drop facility allows the operator to view multiple cameras from different sites on the same screen and the same time

## BANDWIDTH MANAGEMENT

Bit rate can be managed by site, by camera and by server.

## 'DRAG & DROP'

NetVu ObserVer has been designed to ease camera and monitor selection for the Operator. By simply selecting a camera from the site tree and dragging this to the monitor segment of the display the operator can build a matrix of images (up to 16) from any of the stored locations.

## AUDIO

User access to control the audio over the network providing a bi-directional audio link between the New Digital Sprite 2 and the Operator PC.

## REPLAY SERVER

The NetVu ObserVer application includes an integrated replay server that allows recordings that have been archived (to the local PC hard drive, an external server or a CD-Rom) to be accessed and reviewed instantly, removing the need for a dedicated playback application.

## EVENT LIST

Allows instant access to a list of events that are triggered via the configured product (i.e. Power Off alarms, VMD activity) these recorded events can then be reviewed at the remote location through NetVu ObserVer.

## EVENT FILTERING & PREVIEW

Events may be filtered by date, camera, and alarm type. Filters can also be cleared and reset to default in order for the whole list to be viewed.

A separate preview window now enables fast and accurate validation of events

## TEXT SEARCH

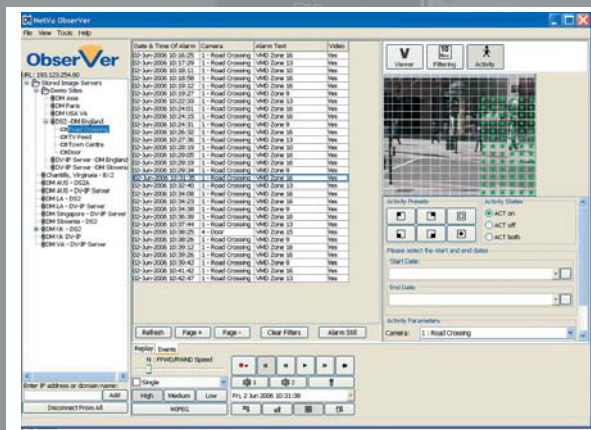
The new DS2 and DV-IP Server have the capability to record raw or formatted text from tills, ATM's or other business systems. Now remote users can search the recorded images for specific words. NetVu ObserVer then displays a list of text events for review and interpretation.

## TEXT DISPLAY

Text generated from information systems, such as POS and ATM machines, can be viewed through NetVu ObserVer in a dedicated window. The text, recorded on a NetVu Connected DVR or Video Server, is automatically displayed with the camera selected for viewing, allowing the text to be shown with the relevant video footage. Remote operators, such as managers, can easily access the information; ensuring text data is not restricted to local operators of the DVR. In addition, text captured on video servers can also be viewed.

## SMART SEARCH

Users are now able to search recorded video for movement in specific areas of the video image. This feature allows users to retrospectively search for VMD (Video Motion Detection), even if VMD wasn't enabled at the time of recording. This is efficient search method for situations where you wish to quickly identify an occurrence in a particular area of the image.



Smart Search

## TELEMETRY

The product allows complete remote support of Telemetry enabled cameras including functions such as PTZ, focus, wash/wipe and preset recall.

To avoid operator overload – Telemetry controls can be automatically hidden when non-telemetry cameras are displayed.

## RVRC SUPPORT

NetVu ObserVer now enables operation in RVRC environments by providing a number of additional capabilities.

An Event Distribution Module is now included, that enables auto serving of events to multi client environments, enabling operator utilisation to be maximised. Events can be grouped together in Sessions from the same site and can then be characterised on closure, providing the essential management information for both billing and site maintenance. This information can be extracted in user definable reports from the SQL database.

## DISPLAY PRESETS

NetVu ObserVer can save preset screens of up to 16 different cameras from various sites for instant viewing of either live or recorded images. These can be presets can be named by the operator to allow quick and easy selection.

## VIDEO DOWNLOAD

The feature allows an Operator to download recorded video from the NetVu Connected product, allowing important evidence to be made available for review. This video can then be viewed, using the replay server feature of the NetVu ObserVer, at a replay station and will not take the Operator away from his task of monitoring the live video.

## SAVE/PRINT IMAGE OPTION

By right clicking on the video window, users are presented with the option to save the current image to file or print to a local printer.

## REFERENCE IMAGES

The user is now able to create reference images for specific cameras. These can be used later to act as a point of reference for camera movement, image deterioration or image obstruction.

Access to the image is a simple right click selection on the camera in the site tree.

## REMOTE CONFIGURATION

Accessible via a web browser, NetVu ObserVer allows remote configuration of all the enabled features on the NetVu Connected DM product. Of course these can be protected by usernames and passwords

## NETVU CONNECTED

NetVu ObserVer is one of a growing number of products that include NetVu Connected technology built-in to ensure maximum compatibility with future developments in networked security.

NetVu Connected enables NetVu ObserVer to fully interoperate with other NetVu compatible products from DM. NetVu Connected uses industry standard networking protocols supported by a wide range of third-party integration products and DM's SDK to ensure on-going compatibility for the future.

## SUPPORTED PRODUCTS

THE NEW DS2  
DV-IP ATM  
DV-IP SERVER  
ECO9  
ECO16  
TRANSVU  
BX2  
BX2 CA  
DS SERVER

## COMPATIBILITY

NetVu ObserVer is supplied with the New Digital Sprite 2 and DV-IP Server; previous applications (DM Network Viewer, PC Playback and Remote Admin Program) are not compatible with the new DS2. Please note that software updates are available for previous generations of DS2 and Eco4 units to allow them to interoperate in a NetVu Connected network.

## LANGUAGES

English, German, Spanish, Italian, Dutch, French & Hungarian.

## PC REQUIREMENTS

### Minimum:

Operating System: Windows 2000 or later  
Processor: 1GHz Intel Pentium 3 or equivalent  
System RAM: 512MB  
Screen Resolution: 800x600\*\*  
Colour Depth: 24bit\*\*  
JRE Version: 1.5.0

### Recommended:

Operating System: Windows XP  
Processor: 2GHz Intel Pentium 4 or equivalent  
System RAM: 1024MB  
Screen Resolution: 1024x768 or higher\*\*  
Colour Depth: 24bit or 32bit\*\*  
JRE Version: 1.5.0

**\*\* For best performance, use a suitably configured DirectX compatible video card.**

TO ENSURE THAT PREVIOUS DM PRODUCTS ARE COMPATIBLE PLEASE FOLLOW THE TABLE BELOW:

### JPEG FORMAT VIDEO

DV-IP  
DV-IP ATM  
TRANSVU

ALL SOFTWARE VERSIONS

DIGITAL SPRITE (DS2A)  
DIGITAL SPRITE (DS2P)  
ECO4  
BX2P

CONTACT TECHNICAL SUPPORT IN YOUR REGION  
FOR UPGRADE ADVICE

### MPEG-4 AND JPEG FORMAT VIDEO

DV-IP SERVER

FROM SOFTWARE VERSION 3.1 (11.2)

THE NEW DS2

ALL SOFTWARE VERSIONS

PLEASE VISIT THE PARTNERS AREA AT [www.dedicatedmicros.com/uk/partner\\_home.php](http://www.dedicatedmicros.com/uk/partner_home.php)  
FOR FURTHER INFORMATION

NetVu ObserVer is free and available as a download from the Dedicated Micros website and is included with all NetVu Connected products.

The Map Editor is also free and available as a download from the Dedicated Micros website.

Visit [http://www.dedicatedmicros.com/uk/support\\_product\\_map\\_plugin.php](http://www.dedicatedmicros.com/uk/support_product_map_plugin.php) or contact customer services in your region for more information.

PLEASE CHECK THE WEBSITE FOR DETAILS OF COMPATIBLE PRODUCTS AND OTHER LATEST DEVELOPMENTS

FOR FURTHER INFORMATION PLEASE CONTACT

Dedicated Micros UK 1200 Daresbury Park, Daresbury, Warrington, WA4 4GB - Tel: +44 (0) 845 600 9500 Fax: +44 (0) 845 600 9504  
Dedicated Micros USA 14434 Albemarle Point Place, Suite 100, Chantilly, Virginia 20151 - USA Freephone: 800 864 7539  
Tel: +1 703 904-7738 Fax: +1 703 904-7743 and 23456 Hawthorne Blvd, Suite 100, Torrance, CA 90505  
Tel: +1 310 791-8666 Fax: +1 310 791-9877

Dedicated Micros Germany Neckerstraße 15a, 41836 Hückelhoven, Germany - Tel: +49 243 352 580 Fax: +49 24 33 52 58 10

Dedicated Micros France 9-13 rue du Moulinet, 75013 Paris, France - Tel: +33 1 45 81 99 99 Fax: +33 1 45 81 99 89

Dedicated Micros Asia 16 New Industrial Road, #03-03 Hudson TechnoCentre, Singapore 536204 - Tel: +65 62858982 Fax: +65 62858646

Dedicated Micros Australia 2/9 Packard Avenue, Castle Hill, NSW 2154, Australia - Tel: +612 9634 4211 Fax: +612 9634 4811

Dedicated Micros New Zealand PO Box 180046, Luckens Point, West Harbour, Auckland 0663, New Zealand - Freephone: 0800 364 276  
Tel: +64 (09) 448 2366 Fax: +64 (09) 448 2369

Dedicated Micros Malta BLB017, Bulebel Industrial Estate, Zejtun, ZTN08, Malta - Tel: +356 21483 673/4 Fax: +356 21449 170

Dedicated Micros Middle East Building 12, Suite 302, P.O.Box 500291, Dubai Internet City, Dubai, UAE - Tel: +971 (4) 390 1015  
Fax: +971 (4) 390 8655

Dedicated Micros Slovenia Delavska cesta 24, 4208 Sencur, Slovenia - Tel: +386 4 279 18 90 Fax: +386 4 279 18 91

Dedicated Micros Benelux Joseph Chantraineplantsoen 1, 3070 Kortenberg, Belgium - Tel: +32 2751 3480 Fax: +32 2751 3481

**DEDICATED MICROS**

[www.dedicatedmicros.com](http://www.dedicatedmicros.com)

The manufacturer reserves the right to change the specification without notice.  
All trademarks are courtesy of registered owners. The DM logo and NetVu Connected logo are trademarks of Dedicated Microcomputers group Ltd.  
MKT-NVO-D-006E

